

LAKE COUNTY

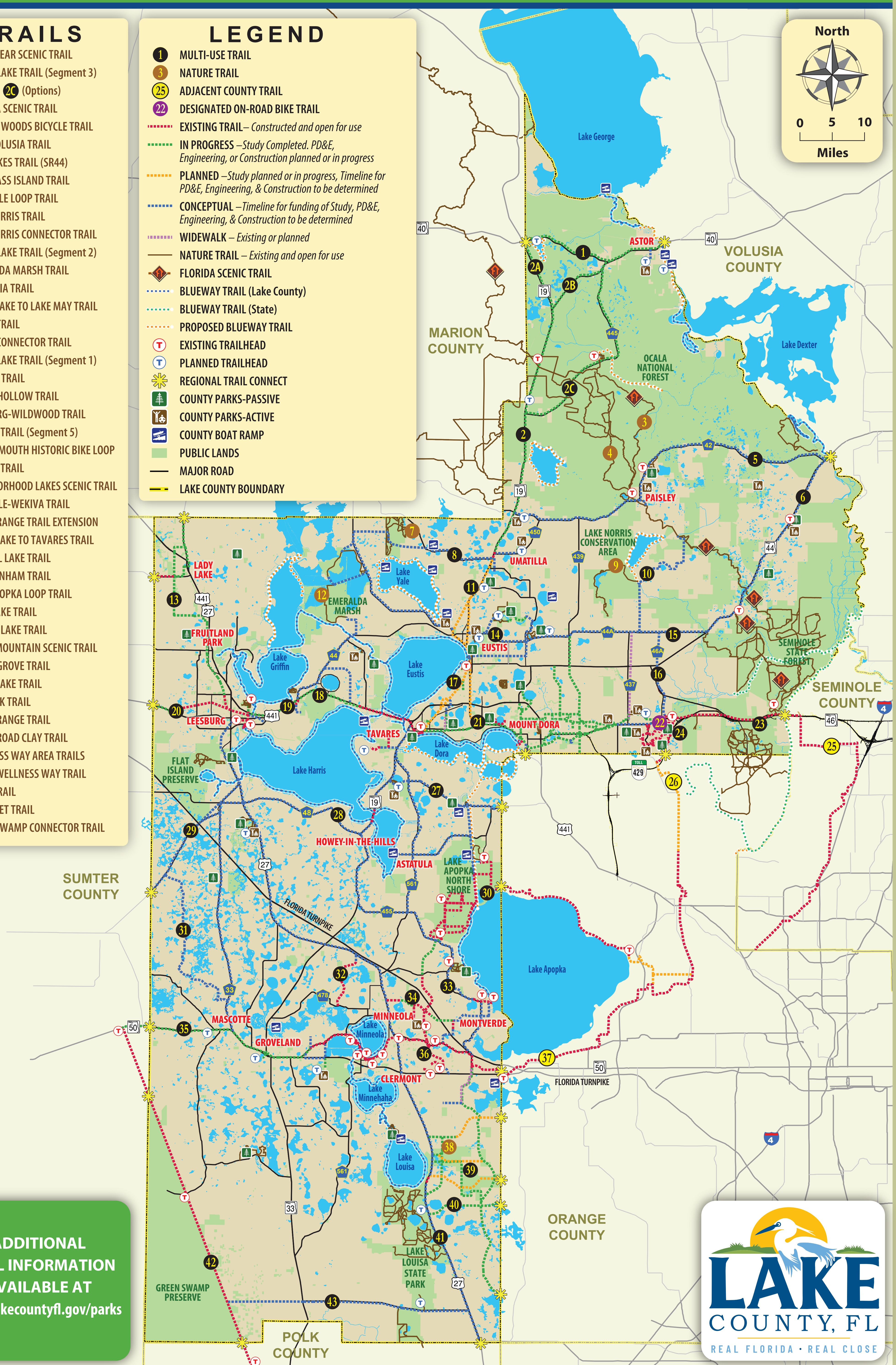
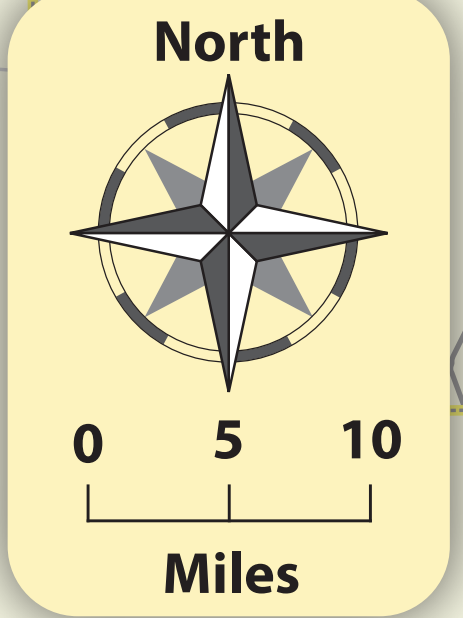
TRAILS MASTER PLAN

TRAILS

- 1 BLACK BEAR SCENIC TRAIL
- 2 NORTH LAKE TRAIL (Segment 3)
2A 2B 2C (Options)
- 3 FLORIDA SCENIC TRAIL
- 4 PAISLEY WOODS BICYCLE TRAIL
- 5 LAKE-VOLUSIA TRAIL
- 6 PINE LAKES TRAIL (SR44)
- 7 SAWGRASS ISLAND TRAIL
- 8 LAKE YALE LOOP TRAIL
- 9 LAKE NORRIS TRAIL
- 10 LAKE NORRIS CONNECTOR TRAIL
- 11 NORTH LAKE TRAIL (Segment 2)
- 12 EMERALDA MARSH TRAIL
- 13 GARDENIA TRAIL
- 14 TROUT LAKE TO LAKE MAY TRAIL
- 15 CR 44A TRAIL
- 16 CR 46A CONNECTOR TRAIL
- 17 NORTH LAKE TRAIL (Segment 1)
- 18 TAV-LEE TRAIL
- 19 SLEEPY HOLLOW TRAIL
- 20 LEESBURG-WILDWOOD TRAIL
- 21 WEKIVA TRAIL (Segment 5)
- 22 MT. PLYMOUTH HISTORIC BIKE LOOP
- 23 WEKIVA TRAIL
- 24 NEIGHBORHOOD LAKES SCENIC TRAIL
- 25 SEMINOLE-WEKIVA TRAIL
- 26 WEST ORANGE TRAIL EXTENSION
- 27 SOUTH LAKE TO TAVARES TRAIL
- 28 CENTRAL LAKE TRAIL
- 29 LAKE DENHAM TRAIL
- 30 LAKE APOPKA LOOP TRAIL
- 31 WEST LAKE TRAIL
- 32 WILSON LAKE TRAIL
- 33 GREEN MOUNTAIN SCENIC TRAIL
- 34 CITRUS GROVE TRAIL
- 35 SOUTH LAKE TRAIL
- 36 HANCOCK TRAIL
- 37 WEST ORANGE TRAIL
- 38 5-MILE ROAD CLAY TRAIL
- 39 WELLNESS WAY AREA TRAILS
- 40 SR 516 WELLNESS WAY TRAIL
- 41 US-27 TRAIL
- 42 VAN FLEET TRAIL
- 43 GREEN SWAMP CONNECTOR TRAIL

LEGEND

- 1 MULTI-USE TRAIL
 - 3 NATURE TRAIL
 - 25 ADJACENT COUNTY TRAIL
 - 22 DESIGNATED ON-ROAD BIKE TRAIL
- EXISTING TRAIL – Constructed and open for use
- IN PROGRESS – Study Completed, PD&E, Engineering, or Construction planned or in progress
- PLANNED – Study planned or in progress, Timeline for PD&E, Engineering, & Construction to be determined
- CONCEPTUAL – Timeline for funding of Study, PD&E, Engineering, & Construction to be determined
- WIDEWALK – Existing or planned
- NATURE TRAIL – Existing and open for use
- FLORIDA SCENIC TRAIL
- BLUEWAY TRAIL (Lake County)
- BLUEWAY TRAIL (State)
- PROPOSED BLUEWAY TRAIL
- EXISTING TRAILHEAD
- PLANNED TRAILHEAD
- REGIONAL TRAIL CONNECT
- COUNTY PARKS-PASSIVE
- COUNTY PARKS-ACTIVE
- COUNTY BOAT RAMP
- PUBLIC LANDS
- MAJOR ROAD
- LAKE COUNTY BOUNDARY



ADDITIONAL
TRAIL INFORMATION
AVAILABLE AT
www.lakecountyfl.gov/parks

